

Last Summer at Bluefish Cove

Bluefish Updated.lw5

FOCUS CHARTS



11/29/2022



Last Summer at Bluefish Cove

Bluefish Updated.lw5

FOCUS CHARTS



11/29/2022

TABLE OF CONTENTS

BAY 1	2	bay 4	20
2	6	Bay 5	22
Bay 3	13	bay 6a-2	25
bay 4a-2	19	Bay 6	26

Last Summer at Bluefish Cove

Bluefish Updated.lw5

FOCUS CHARTS



BAY 1

U#	Instrument Type	Watt	Purp	Instrument Type & Accessory & Wattage	Chan
	50deg ERS	575w	W1	50deg ERS+Light Acc C Clamp 575w	(75)

@

Nt:

Scy

Bea In/Sp - - ⊕ - - Out/Fl Axis: | ⊖ / \ L/R US/DS

US:

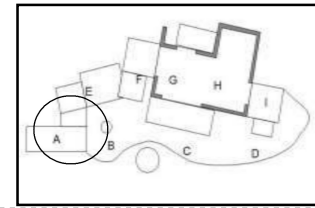
DS:

SR:

SL:

Top:

Bot:



 19deg with lcue 575w lcue 19deg with lcue+Light Acc C Clamp 575w (82)

@

Nt:

Scy

Bea In/Sp - - ⊕ - - Out/Fl Axis: | - / \ L/R US/DS

US:

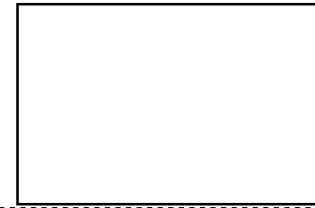
DS:

SR:

SL:

Top:

Bot:



 19deg with lcue 575w lcue 19deg with lcue+Light Acc C Clamp 575w (81)

@

Nt:

Scy

Bea In/Sp - - ⊕ - - Out/Fl Axis: | - / \ L/R US/DS

US:

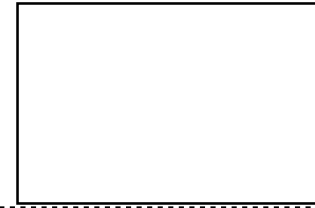
DS:

SR:

SL:

Top:

Bot:



Last Summer at Bluefish Cove

Bluefish Updated.lw5

FOCUS CHARTS



BAY 1

U#	Instrument Type	Watt	Purp	Instrument Type & Accessory & Wattage	Chan
	26deg with Seachanger	575w	E	26deg with Seachanger+Light Acc C Clamp 575w	(45)

10' R @ 17'

Nt:

Scy

Bea In/Sp - - ⊕ - - Out/Fl

Axis: | - / \ L/R US/DS

US:

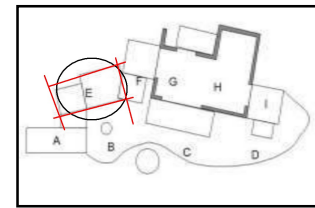
DS:

SR: **Edge of platform**

SL: **Edge of platform**

Top: **Edge of platform**

Bot: **Edge of platform**



	26deg with Seachanger	575w	A	26deg with Seachanger+Light Acc C Clamp 575w	(41)
--	-----------------------	------	---	--	------

13' R @ 10'6"

Nt:

Scy

Bea In/Sp - - ⊕ - - Out/Fl

Axis: | - / \ L/R US/DS

US:

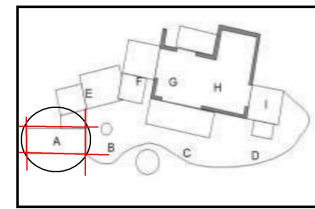
DS:

SR: **Edge of platform**

SL: **Edge of platform**

Top: **Edge of platform**

Bot: **Edge of platform**



	36deg ERS	575w	EF	36deg ERS+Light Acc C Clamp 575w	(93)
--	-----------	------	----	----------------------------------	------

7' R @ 17'

Nt:

Scy

Bea In/Sp - - ⊕ - - Out/Fl

Axis: | - / \ L/R US/DS

US:

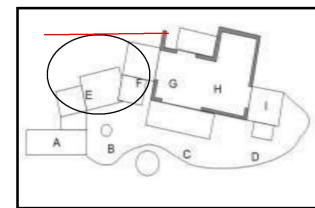
DS:

SR:

SL:

Top: **Off Curtain**

Bot:



Last Summer at Bluefish Cove

Bluefish Updated.lw5

FOCUS CHARTS



BAY 1

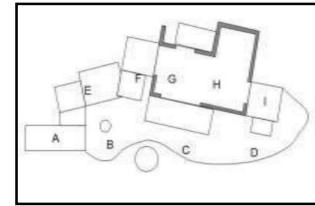
U#	Instrument Type	Watt	Purp	Instrument Type & Accessory & Wattage	Chan
	36deg ERS	575w	Rock	36deg ERS+Light Acc C Clamp 575w	(94)

1' R @ 10'

Nt:

Scy

Bea In/Sp - - ⊕ - - Out/Fl Axis: | — / \ L/R US/DS
 US: DS:
 SR: SL:
 Top: Bot:



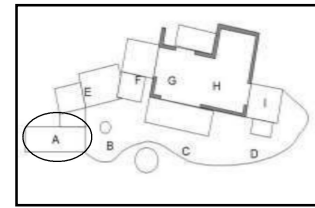
D60 Vivid 161w A D60 Vivid+Light Acc C Clamp 161w (31)

13' R @ 10'6"

Nt: MF Oval

Scy

Bea In/Sp - - + - - Out/Fl Axis: | ⊖ / \ L/R US/DS
 US: DS:
 SR: SL:
 Top: Bot:



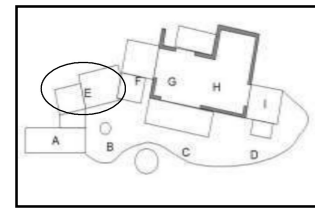
D60 Vivid 161w E D60 Vivid+Light Acc C Clamp 161w (35)

10' R @ 17'

Nt:

Scy

Bea In/Sp - - + - - Out/Fl Axis: | ⊖ / \ L/R US/DS
 US: DS:
 SR: SL:
 Top: Bot:



Last Summer at Bluefish Cove

Bluefish Updated.lw5

FOCUS CHARTS



BAY 1

U#	Instrument Type	Watt	Purp	Instrument Type & Accessory & Wattage	Chan
	PAR MFL	575w	W1	PAR MFL+Light Acc C Clamp 575w	(71)

@

Nt:

Scy

Bea In/Sp - - + - - Out/Fl

Axis: | ⊖ / \ L/R US/DS

US:

DS:

SR:

SL:

Top:

Bot:

PAR MFL

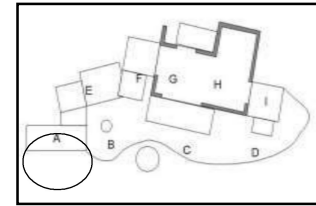
575w A

PAR MFL+Light Acc C Clamp 575w

(21)

13' R @ 10'6"

Nt:



Scy

Bea In/Sp - - + - - Out/Fl

Axis: | ⊖ / \ L/R US/DS

US:

DS:

SR:

SL:

Top:

Bot:

PAR MFL

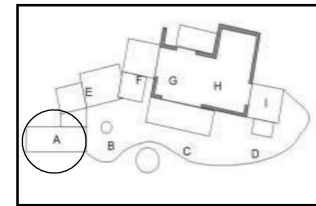
575w E

PAR MFL+Light Acc C Clamp 575w

(25)

10' R @ 17'

Nt:



Scy

Bea In/Sp - - + - - Out/Fl

Axis: | ⊖ / \ L/R US/DS

US:

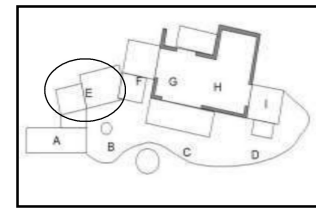
DS:

SR:

SL:

Top:

Bot:



Last Summer at Bluefish Cove

Bluefish Updated.lw5

FOCUS CHARTS



2

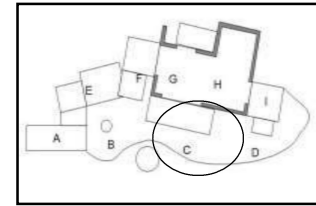
U#	Instrument Type	Watt	Purp	Instrument Type & Accessory & Wattage	Chan
	50deg ERS	575w	W3	50deg ERS+Light Acc C Clamp 575w	(77)

@

Nt:

Scy

Bea In/Sp ☹ - + - - Out/Fl Axis: | - / \ L/R US/DS
 US: DS:
 SR: SL:
 Top: Bot:



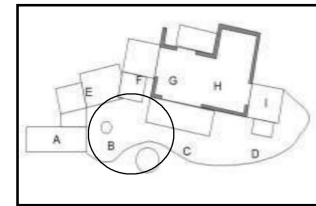
50deg ERS	575w	W2	50deg ERS+Light Acc C Clamp 575w	(76)
-----------	------	----	----------------------------------	------

@

Nt:

Scy

Bea In/Sp ☹ - + - - Out/Fl Axis: | - / \ L/R US/DS
 US: DS:
 SR: SL:
 Top: Bot:



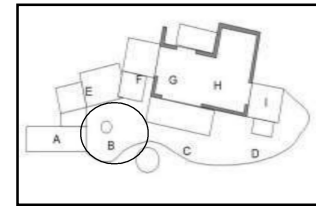
26deg with Seachanger	575w	B	26deg with Seachanger+Light Acc C Clamp 575w	(42)
-----------------------	------	---	--	------

6' R @ 10'6"

Nt:

Scy

Bea In/Sp - - ⊕ - - Out/Fl Axis: | - / \ L/R US/DS
 US: DS:
 SR: SL:
 Top: Bot:



Last Summer at Bluefish Cove

Bluefish Updated.lw5

FOCUS CHARTS



2

U#	Instrument Type	Watt	Purp	Instrument Type & Accessory & Wattage	Chan
	26deg with Seachanger	575w	C	26deg with Seachanger+Light Acc C Clamp 575w	(43)

3' L @ 10'6"

Nt:

Scy

Bea In/Sp - - ⊕ - - Out/Fl

Axis: | — / \ L/R US/DS

US:

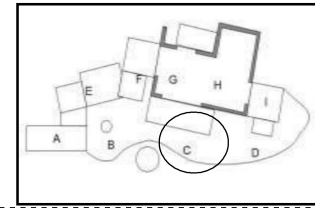
DS:

SR:

SL:

Top:

Bot:



	26deg with Seachanger	575w	G	26deg with Seachanger+Light Acc C Clamp 575w	(47)
--	-----------------------	------	---	--	------

3' L @ 18'

Nt:

Scy

Bea In/Sp - - ⊕ - - Out/Fl

Axis: | — / \ L/R US/DS

US:

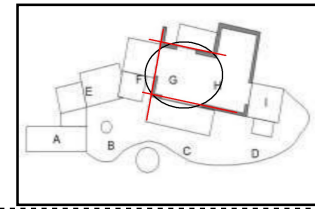
DS:

SR: **Off Wall**

SL:

Top: **Off Wall**

Bot: **Off Wall**



	26deg with Seachanger	575w	F	26deg with Seachanger+Light Acc C Clamp 575w	(46)
--	-----------------------	------	---	--	------

3'6" R @ 18'

Nt:

Scy

Bea In/Sp - - ⊕ - - Out/Fl

Axis: | — / \ L/R US/DS

US:

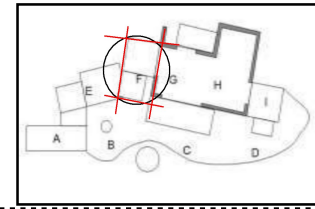
DS:

SR: **Edge of platform**

SL: **Outside of wall**

Top: **Edge of platform**

Bot: **Edge of platform**



Last Summer at Bluefish Cove

Bluefish Updated.lw5

FOCUS CHARTS



2

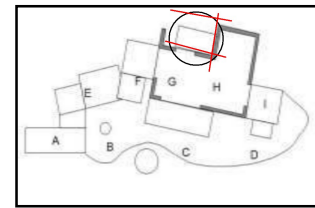
U#	Instrument Type	Watt	Purp	Instrument Type & Accessory & Wattage	Chan
	26deg with Seachanger	575w	Room	26deg with Seachanger+Light Acc C Clamp 575w	(53)

5' L @ 22'

Nt:

Scy

Bea In/Sp - - ⊕ - - Out/Fl Axis: | - / \ L/R US/DS
 US: DS:
 SR: SL: **Outside of wall**
 Top: **Off Curtain** Bot: **Outside of wall**



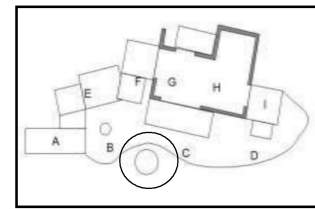
	26deg with Seachanger	575w	Rock	26deg with Seachanger+Light Acc C Clamp 575w	(68)
--	-----------------------	------	------	--	------

1' R @ 10'

Nt:

Scy

Bea In/Sp - - ⊕ - - Out/Fl Axis: | - / \ L/R US/DS
 US: DS:
 SR: SL:
 Top: Bot:



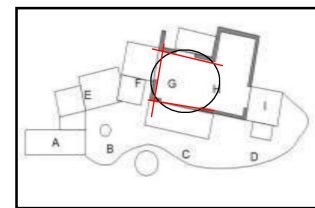
	26deg ERS	575w	G	26deg ERS+Light Acc C Clamp 575w	(18)
--	-----------	------	---	----------------------------------	------

3' L @ 18'

Nt:

Scy

Bea In/Sp - - ⊕ - - Out/Fl Axis: | - / \ L/R US/DS
 US: DS:
 SR: **Off Wall** SL:
 Top: **Off Wall** Bot: **Off Wall**



Last Summer at Bluefish Cove

Bluefish Updated.lw5

FOCUS CHARTS



2

U#	Instrument Type	Watt	Purp	Instrument Type & Accessory & Wattage	Chan
	D60 Vivid	161w	G	D60 Vivid+Light Acc C Clamp 161w	(37)

3' L @ 18'

Nt:

Scy

Bea In/Sp - - + - - Out/Fl

Axis: | ⊖ / \ L/R US/DS

US:

DS:

SR:

SL:

Top:

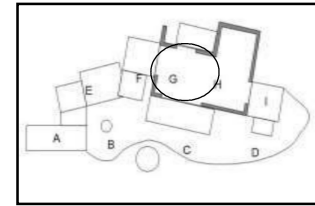
Bot:

D60 Vivid

161w B

D60 Vivid+Light Acc C Clamp 161w

(32)



6' R @ 10'6"

Nt: MF Oval

Scy

Bea In/Sp - - + - - Out/Fl

Axis: | ⊖ / \ L/R US/DS

US:

DS:

SR:

SL:

Top:

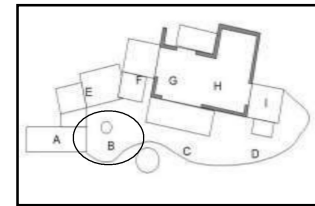
Bot:

D60 Vivid

161w F

D60 Vivid+Light Acc C Clamp 161w

(36)



3'6" R @ 18'

Nt:

Scy

Bea In/Sp - - + - - Out/Fl

Axis: | ⊖ / \ L/R US/DS

US:

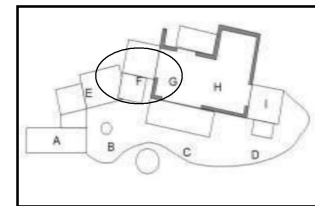
DS:

SR:

SL:

Top:

Bot:



Last Summer at Bluefish Cove

Bluefish Updated.lw5

FOCUS CHARTS



2

U#	Instrument Type	Watt	Purp	Instrument Type & Accessory & Wattage	Chan
	D60 Vivid	161w	C	D60 Vivid+Light Acc C Clamp 161w	(33)

3' L @ 10'6"

Nt: **MF Oval**

Scy

Bea In/Sp - - + - - Out/Fl

Axis: | ⊖ / \ L/R US/DS

US:

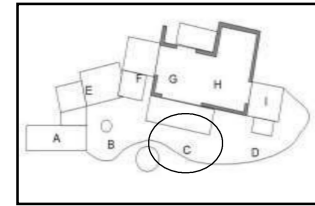
DS:

SR:

SL:

Top:

Bot:



PAR MFL

575w W3

PAR MFL+Light Acc C Clamp 575w

(73)

@

Nt:

Scy

Bea In/Sp - - + - - Out/Fl

Axis: | ⊖ / \ L/R US/DS

US:

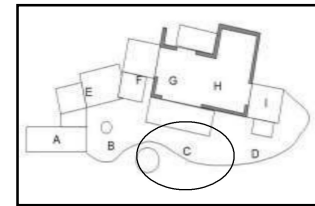
DS:

SR:

SL:

Top:

Bot:



PAR MFL

575w W2

PAR MFL+Light Acc C Clamp 575w

(72)

@

Nt:

Scy

Bea In/Sp - - + - - Out/Fl

Axis: | ⊖ / \ L/R US/DS

US:

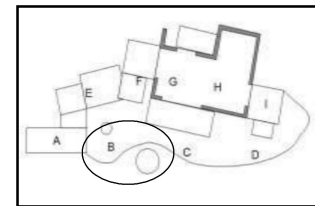
DS:

SR:

SL:

Top:

Bot:



Last Summer at Bluefish Cove

Bluefish Updated.lw5

FOCUS CHARTS



2

U#	Instrument Type	Watt	Purp	Instrument Type & Accessory & Wattage	Chan
	PAR MFL	575w	G	PAR MFL+Light Acc C Clamp 575w	(27)

3' L @ 18'

Nt:

Scy

Bea In/Sp - - + - - Out/Fl

Axis: | ⊖ / \ L/R US/DS

US:

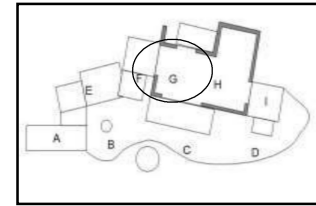
DS:

SR:

SL:

Top:

Bot:



PAR MFL	575w	F	PAR MFL+Light Acc C Clamp 575w	(26)
---------	------	---	--------------------------------	------

3'6" R @ 18'

Nt:

Scy

Bea In/Sp - - + - - Out/Fl

Axis: | ⊖ / \ L/R US/DS

US:

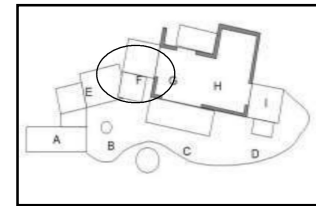
DS:

SR:

SL:

Top:

Bot:



PAR MFL	575w	C	PAR MFL+Light Acc C Clamp 575w	(23)
---------	------	---	--------------------------------	------

3' L @ 10'6"

Nt:

Scy

Bea In/Sp - - + - - Out/Fl

Axis: | ⊖ / \ L/R US/DS

US:

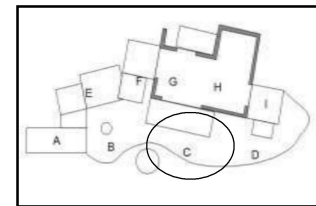
DS:

SR:

SL:

Top:

Bot:



Last Summer at Bluefish Cove

Bluefish Updated.lw5

FOCUS CHARTS



2

U#	Instrument Type	Watt	Purp	Instrument Type & Accessory & Wattage	Chan
	PAR MFL	575w	B	PAR MFL+Light Acc C Clamp 575w	(22)

6' R @ 10'6"

Nt:

Scy

Bea In/Sp - - + - - Out/Fl

Axis: | ⊖ / \ L/R US/DS

US:

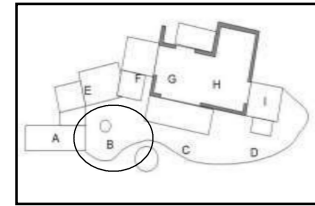
DS:

SR:

SL:

Top:

Bot:



Last Summer at Bluefish Cove

Bluefish Updated.lw5

FOCUS CHARTS



Bay 3

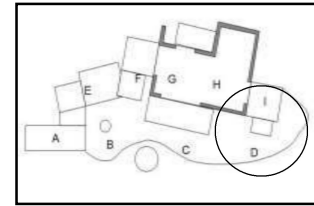
U#	Instrument Type	Watt	Purp	Instrument Type & Accessory & Wattage	Chan
	50deg ERS	575w	W4	50deg ERS+Light Acc C Clamp 575w	(78)

@

Nt:

Scy

Bea In/Sp ⊖ - + - - Out/Fl Axis: | — / \ L/R US/DS
 US: DS:
 SR: SL:
 Top: Bot:



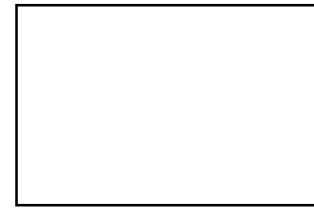
19deg with Icue	575w	Icue	19deg with Icue+Light Acc C Clamp 575w	(84)
-----------------	------	------	--	------

@

Nt:

Scy

Bea In/Sp - - ⊕ - - Out/Fl Axis: | — / \ L/R US/DS
 US: DS:
 SR: SL:
 Top: Bot:



19deg with Icue	575w	Icue	19deg with Icue+Light Acc C Clamp 575w	(83)
-----------------	------	------	--	------

@

Nt:

Scy

Bea In/Sp - - ⊕ - - Out/Fl Axis: | — / \ L/R US/DS
 US: DS:
 SR: SL:
 Top: Bot:



Last Summer at Bluefish Cove

Bluefish Updated.lw5

FOCUS CHARTS



Bay 3

U#	Instrument Type	Watt	Purp	Instrument Type & Accessory & Wattage	Chan
	26deg with Seachanger	575w	D	26deg with Seachanger+Light Acc C Clamp 575w	(44)

12' L @ 10'6"

Nt:

Scy

Bea In/Sp - - ⊕ - - Out/Fl

Axis: | - / \ L/R US/DS

US:

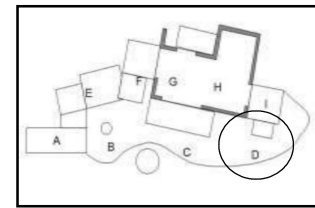
DS:

SR:

SL:

Top:

Bot:



	26deg with Seachanger	575w	I	26deg with Seachanger+Light Acc C Clamp 575w	(49)
--	-----------------------	------	---	--	------

13'6" L @ 17'

Nt:

Scy

Bea In/Sp - - ⊕ - - Out/Fl

Axis: | - / \ L/R US/DS

US:

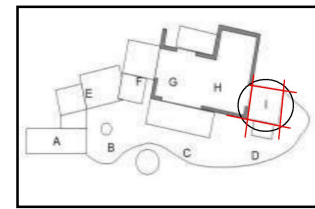
DS:

SR: **Outside of wall**

SL: **Edge of platform**

Top: **Edge of platform**

Bot: **Edge of platform**



	26deg with Seachanger	575w	H	26deg with Seachanger+Light Acc C Clamp 575w	(48)
--	-----------------------	------	---	--	------

8' L @ 18'

Nt:

Scy

Bea In/Sp - - ⊕ - - Out/Fl

Axis: | - / \ L/R US/DS

US:

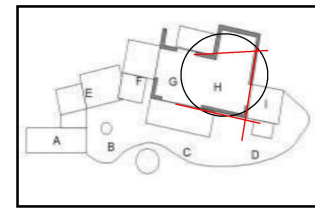
DS:

SR: **Off Wall**

SL:

Top: **Off DS Wall**

Bot: **Off Wall**



Last Summer at Bluefish Cove

Bluefish Updated.Iw5

FOCUS CHARTS



Bay 3

U#	Instrument Type	Watt	Purp	Instrument Type & Accessory & Wattage	Chan
	26deg ERS	575w	H	26deg ERS+Light Acc C Clamp 575w	(19)

8' L @ 18'

Nt:

Scy

Bea In/Sp - - ⊕ - - Out/Fl Axis: | - / \ L/R US/DS

US:

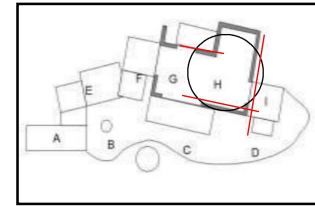
DS:

SR:

SL: **Off Wall**

Top: **Off Wall**

Bot: **Off Wall**



	36deg ERS	575w	Rock	36deg ERS+Light Acc C Clamp 575w	(92)
--	-----------	------	------	----------------------------------	------

1' R @ 10'

Nt:

Scy

Bea In/Sp - - ⊕ - - Out/Fl Axis: | - / \ L/R US/DS

US:

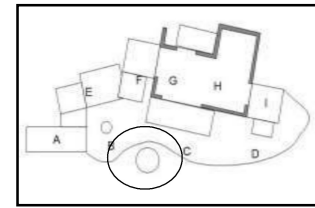
DS:

SR:

SL:

Top:

Bot:



	36deg ERS	575w	HI	36deg ERS+Light Acc C Clamp 575w	(91)
--	-----------	------	----	----------------------------------	------

11' L @ 17'

Nt:

Scy

Bea In/Sp - - ⊕ - - Out/Fl Axis: | - / \ L/R US/DS

US:

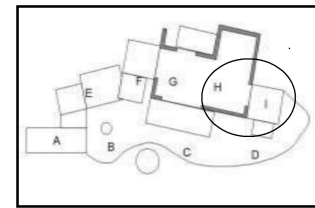
DS:

SR:

SL:

Top:

Bot:



Last Summer at Bluefish Cove

Bluefish Updated.lw5

FOCUS CHARTS



Bay 3

U#	Instrument Type	Watt	Purp	Instrument Type & Accessory & Wattage	Chan
	D60 Vivid	161w	H	D60 Vivid+Light Acc C Clamp 161w	(38)

8' L @ 18'

Nt:

Scy

Bea In/Sp - - + - - Out/Fl

Axis: | ⊖ / \ L/R US/DS

US:

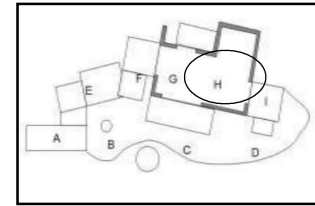
DS:

SR:

SL:

Top:

Bot:



D60 Vivid	161w	D	D60 Vivid+Light Acc C Clamp 161w	(34)
-----------	------	---	----------------------------------	------

12' L @ 10'6"

Nt: MF Oval

Scy

Bea In/Sp - - + - - Out/Fl

Axis: | ⊖ / \ L/R US/DS

US:

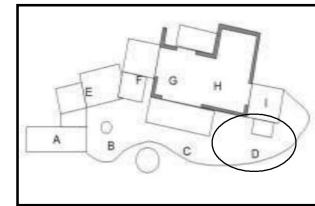
DS:

SR:

SL:

Top:

Bot:



D60 Vivid	161w	I	D60 Vivid+Light Acc C Clamp 161w	(39)
-----------	------	---	----------------------------------	------

13'6" L @ 17'

Nt:

Scy

Bea In/Sp - - + - - Out/Fl

Axis: | ⊖ / \ L/R US/DS

US:

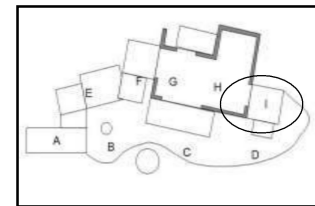
DS:

SR:

SL:

Top:

Bot:



Last Summer at Bluefish Cove

Bluefish Updated.lw5

FOCUS CHARTS



Bay 3

U#	Instrument Type	Watt	Purp	Instrument Type & Accessory & Wattage	Chan
	PAR MFL	575w	W4	PAR MFL+Light Acc C Clamp 575w	(74)

@

Nt:

Scy

Bea In/Sp - - + - - Out/Fl

Axis: | ⊖ / \ L/R US/DS

US:

DS:

SR:

SL:

Top:

Bot:

PAR MFL

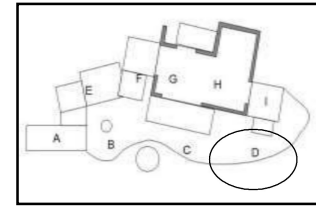
575w I

PAR MFL+Light Acc C Clamp 575w

(29)

13'6" L @ 17'

Nt:



Scy

Bea In/Sp - - + - - Out/Fl

Axis: | ⊖ / \ L/R US/DS

US:

DS:

SR:

SL:

Top:

Bot:

PAR MFL

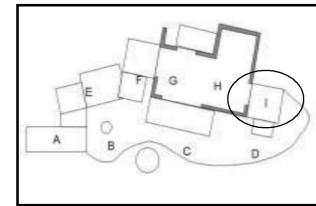
575w H

PAR MFL+Light Acc C Clamp 575w

(28)

8' L @ 18'

Nt:



Scy

Bea In/Sp - - + - - Out/Fl

Axis: | ⊖ / \ L/R US/DS

US:

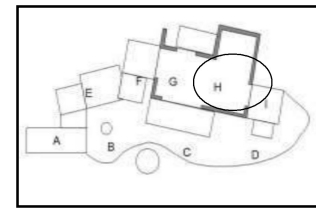
DS:

SR:

SL:

Top:

Bot:



Last Summer at Bluefish Cove

Bluefish Updated.lw5

FOCUS CHARTS



Bay 3

U#	Instrument Type	Watt	Purp	Instrument Type & Accessory & Wattage	Chan
	PAR MFL	575w	D	PAR MFL+Light Acc C Clamp 575w	(24)

12' L @ 10'6"

Nt:

Scy

Bea In/Sp - - + - - Out/Fl

Axis: | ⊖ / \ L/R US/DS

US:

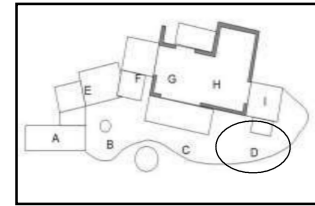
DS:

SR:

SL:

Top:

Bot:



Last Summer at Bluefish Cove

Bluefish Updated.lw5

FOCUS CHARTS



bay 4a-2

U#	Instrument Type	Watt	Purp	Instrument Type & Accessory & Wattage	Chan
	19deg ERS	575w	A	19deg ERS+Light Acc C Clamp 575w	(1)

13' R @ 10'6"

Nt:

Scy

Bea In/Sp - - ⊕ - - Out/Fl

Axis: | - / \ L/R US/DS

US:

DS:

SR: **Edge of platform**

SL:

Top:

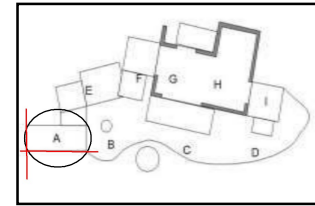
Bot: **Edge of platform**

19deg ERS

575w E

19deg ERS+Light Acc C Clamp 575w

(5)



10' R @ 17'

Nt:

Scy

Bea In/Sp - - ⊕ - - Out/Fl

Axis: | - / \ L/R US/DS

US:

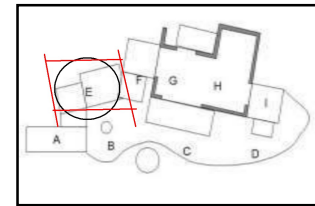
DS:

SR: **Edge of platform**

SL: **Edge of platform**

Top: **Top of head**

Bot: **Edge of platform**



Last Summer at Bluefish Cove

Bluefish Updated.lw5

FOCUS CHARTS



bay 4

U#	Instrument Type	Watt	Purp	Instrument Type & Accessory & Wattage	Chan
	19deg ERS	575w	F	19deg ERS+Light Acc C Clamp 575w	(6)

3'6" R @ 18'

Nt:

Scy

Bea In/Sp - - ⊕ - - Out/Fl

Axis: | - / \ L/R US/DS

US:

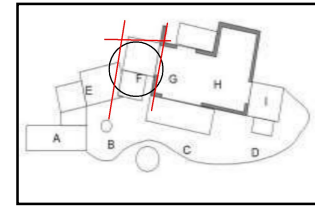
DS:

SR: **Edge of platform**

SL: **Outside of wall**

Top: **Top of head**

Bot:



19deg ERS	575w	C	19deg ERS+Light Acc C Clamp 575w	(3)
-----------	------	---	----------------------------------	-----

3' L @ 10'6"

Nt:

Scy

Bea In/Sp - - ⊕ - - Out/Fl

Axis: | - / \ L/R US/DS

US:

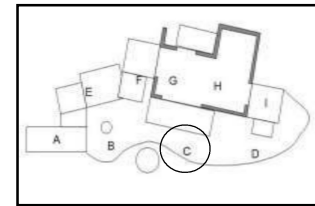
DS:

SR:

SL:

Top:

Bot:



19deg ERS	575w	B	19deg ERS+Light Acc C Clamp 575w	(2)
-----------	------	---	----------------------------------	-----

6' R @ 10'6"

Nt:

Scy

Bea In/Sp - - ⊕ - - Out/Fl

Axis: | - / \ L/R US/DS

US:

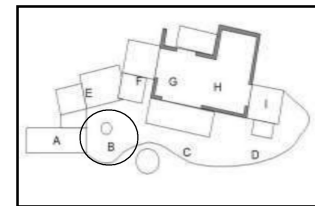
DS:

SR:

SL:

Top:

Bot:



Last Summer at Bluefish Cove

Bluefish Updated.lw5

FOCUS CHARTS



bay 4

U#	Instrument Type	Watt	Purp	Instrument Type & Accessory & Wattage	Chan
	19deg ERS	575w	S2	19deg ERS+Light Acc C Clamp 575w	(62)

10' R @ 17'

Nt:

Scy

Bea In/Sp - - ⊕ - - Out/Fl

Axis: | - / \ L/R US/DS

US:

DS:

SR: **Edge of platform**

SL: **Edge of platform**

Top: **Top of head**

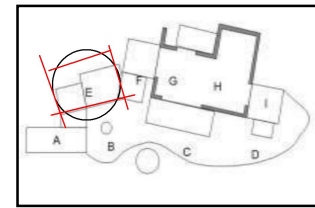
Bot: **Edge of platform**

19deg ERS

575w S1

19deg ERS+Light Acc C Clamp 575w

(61)



13' R @ 10'6"

Nt:

Scy

Bea In/Sp - - ⊕ - - Out/Fl

Axis: | - / \ L/R US/DS

US:

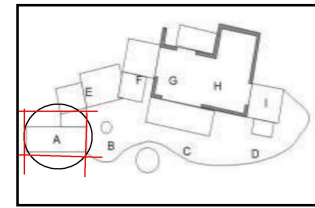
DS:

SR: **Edge of platform**

SL: **Edge of platform**

Top: **Top of head**

Bot: **Edge of platform**



Last Summer at Bluefish Cove

Bluefish Updated.lw5

FOCUS CHARTS



Bay 5

U#	Instrument Type	Watt	Purp	Instrument Type & Accessory & Wattage	Chan
	19deg ERS	575w	A	19deg ERS+Light Acc C Clamp 575w	(11)

13' R @ 10'6"

Nt:

Scy

Bea In/Sp - - ⊕ - - Out/Fl

Axis: | - / \ L/R US/DS

US:

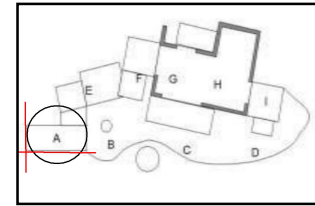
DS:

SR: **Edge of platform**

SL:

Top:

Bot: **Edge of platform**



19deg ERS	575w	E	19deg ERS+Light Acc C Clamp 575w	(15)
-----------	------	---	----------------------------------	------

10' R @ 17'

Nt:

Scy

Bea In/Sp - - ⊕ - - Out/Fl

Axis: | - / \ L/R US/DS

US:

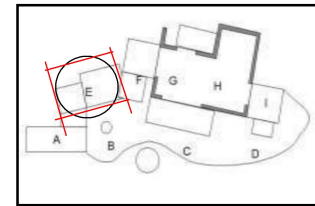
DS:

SR: **Edge of platform**

SL: **Edge of platform**

Top: **Top of head**

Bot: **Edge of platform**



19deg ERS	575w	I	19deg ERS+Light Acc C Clamp 575w	(7)
-----------	------	---	----------------------------------	-----

13'6" L @ 17'

Nt:

Scy

Bea In/Sp - - ⊕ - - Out/Fl

Axis: | - / \ L/R US/DS

US:

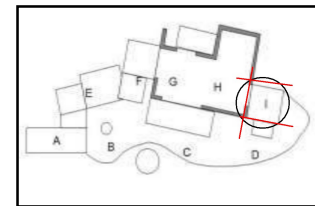
DS:

SR: **Outside of wall**

SL:

Top: **Top of head**

Bot: **Edge of platform**



Last Summer at Bluefish Cove

Bluefish Updated.lw5

FOCUS CHARTS



Bay 5

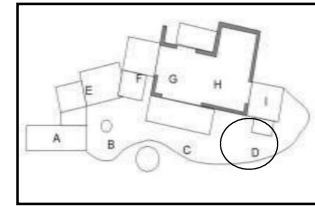
U#	Instrument Type	Watt	Purp	Instrument Type & Accessory & Wattage	Chan
	19deg ERS	575w	D	19deg ERS+Light Acc C Clamp 575w	(4)

12' L @ 10'6"

Nt:

Scy

Bea In/Sp - - ⊕ - - Out/Fl Axis: | - / \ L/R US/DS
 US: DS:
 SR: SL:
 Top: Bot:



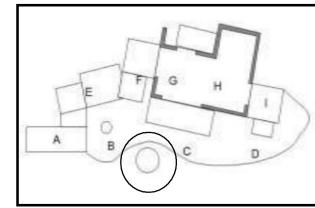
19deg ERS	575w	Rock	19deg ERS+Light Acc C Clamp 575w	(67)
-----------	------	------	----------------------------------	------

1' R @ 10'

Nt:

Scy

Bea In/Sp - - ⊕ - - Out/Fl Axis: | - / \ L/R US/DS
 US: DS:
 SR: SL:
 Top: Bot:



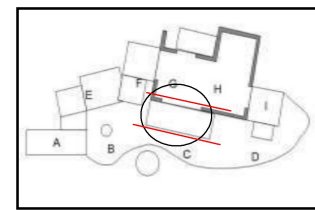
19deg ERS	575w	S4	19deg ERS+Light Acc C Clamp 575w	(64)
-----------	------	----	----------------------------------	------

2' L @ 14'

Nt:

Scy

Bea In/Sp - - ⊕ - - Out/Fl Axis: | - / \ L/R US/DS
 US: DS:
 SR: SL:
 Top: **Bottom of roof** Bot: **Edge of platform**



Last Summer at Bluefish Cove

Bluefish Updated.lw5

FOCUS CHARTS



Bay 5

U#	Instrument Type	Watt	Purp	Instrument Type & Accessory & Wattage	Chan
	19deg ERS	575w	S3	19deg ERS+Light Acc C Clamp 575w	(63)

3'6" R @ 18'

Nt:

Scy

Bea In/Sp - - ⊕ - - Out/Fl

Axis: | — / \ L/R US/DS

US:

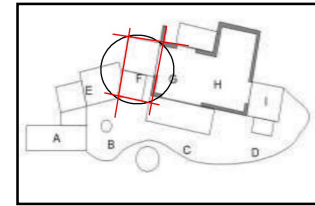
DS:

SR: **Edge of platform**

SL: **Outside of wall**

Top: **Top of head**

Bot: **Edge of platform**



19deg ERS	575w	H	19deg ERS+Light Acc C Clamp 575w	(69)
-----------	------	---	----------------------------------	------

8' L @ 18'

Nt:

Scy

Bea In/Sp - - ⊕ - - Out/Fl

Axis: | — / \ L/R US/DS

US:

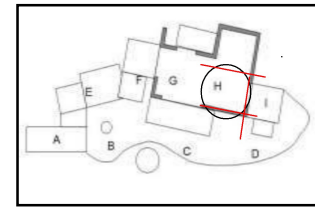
DS:

SR:

SL: **Off Wall**

Top: **Bottom of roof**

Bot:



Last Summer at Bluefish Cove

Bluefish Updated.lw5

FOCUS CHARTS



bay 6a-2

U#	Instrument Type	Watt	Purp	Instrument Type & Accessory & Wattage	Chan
	19deg ERS	575w	I	19deg ERS+Light Acc C Clamp 575w	(17)

13'6" L @ 17'

Nt:

Scy

Bea In/Sp - - ⊕ - - Out/Fl

Axis: | — / \ L/R US/DS

US:

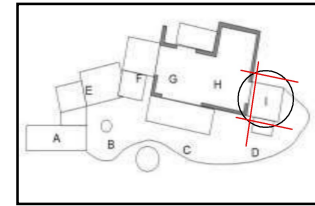
DS:

SR: **Outside of wall**

SL:

Top: **Top of head**

Bot: **Edge of platform**



19deg ERS	575w	D	19deg ERS+Light Acc C Clamp 575w	(14)
-----------	------	---	----------------------------------	------

12' L @ 10'6"

Nt:

Scy

Bea In/Sp - - ⊕ - - Out/Fl

Axis: | — / \ L/R US/DS

US:

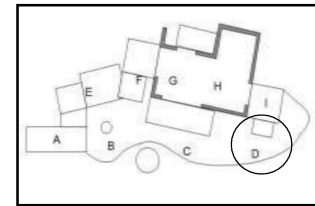
DS:

SR:

SL:

Top:

Bot:



Last Summer at Bluefish Cove

Bluefish Updated.lw5

FOCUS CHARTS



Bay 6

U#	Instrument Type	Watt	Purp	Instrument Type & Accessory & Wattage	Chan
	19deg ERS	575w	F	19deg ERS+Light Acc C Clamp 575w	(16)

3'6" R @ 18'

Nt:

Scy

Bea In/Sp - - ⊕ - - Out/Fl

Axis: | - / \ L/R US/DS

US:

DS:

SR: **Edge of platform**

SL: **Outside of wall**

Top: **Top of head**

Bot:

19deg ERS

575w C

19deg ERS+Light Acc C Clamp 575w

(13)

3' L @ 10'6"

Nt:

Scy

Bea In/Sp - - ⊕ - - Out/Fl

Axis: | - / \ L/R US/DS

US:

DS:

SR:

SL:

Top:

Bot:

19deg ERS

575w B

19deg ERS+Light Acc C Clamp 575w

(12)

6' R @ 10'6"

Nt:

Scy

Bea In/Sp - - ⊕ - - Out/Fl

Axis: | - / \ L/R US/DS

US:

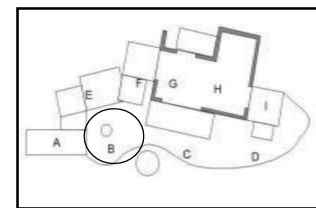
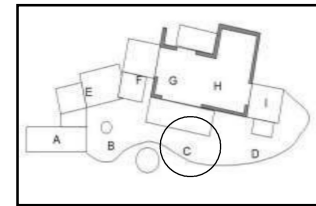
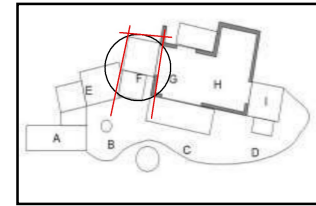
DS:

SR: **Edge of platform**

SL: **Edge of platform**

Top: **Top of head**

Bot: **Edge of platform**



Last Summer at Bluefish Cove

Bluefish Updated.lw5

FOCUS CHARTS



Bay 6

U#	Instrument Type	Watt	Purp	Instrument Type & Accessory & Wattage	Chan
	19deg ERS	575w	S5	19deg ERS+Light Acc C Clamp 575w	(65)

13'6" L @ 17'

Nt:

Scy

Bea In/Sp - - ⊕ - - Out/Fl

Axis: | — / \ L/R US/DS

US:

DS:

SR: **Outside of wall**

SL: **Edge of platform**

Top: **Top of head**

Bot: **Edge of platform**

